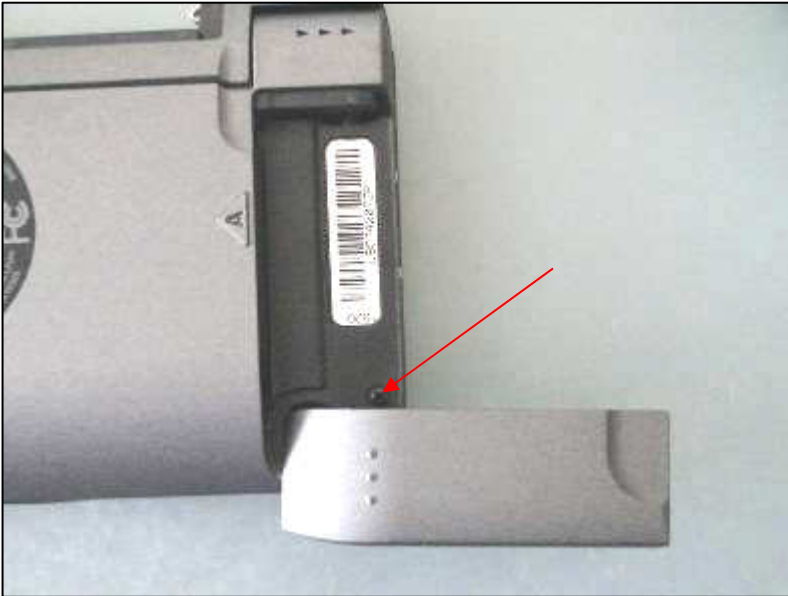
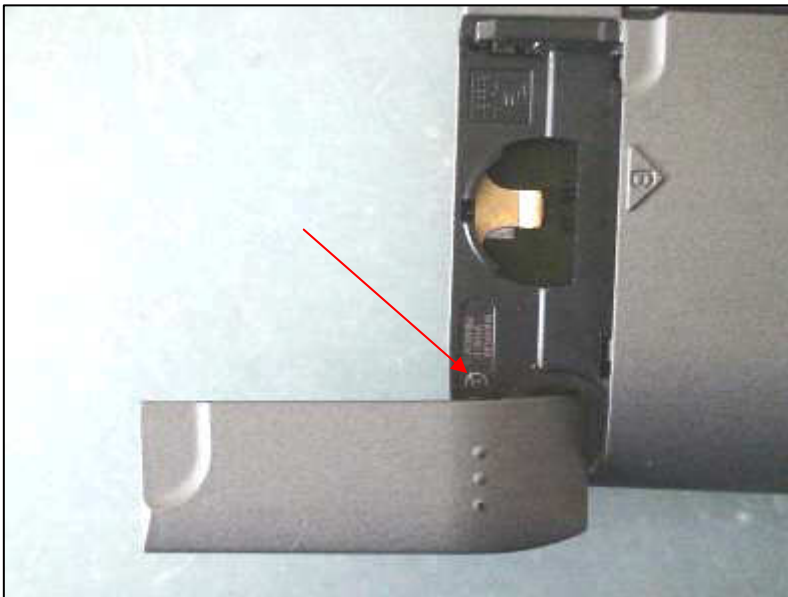


## Flexi Replacement Instructions for Series 3 machines



1. Remove the screw under the left hand memory card cover as shown/



2. Remove the second screw under the tamper evident label. If you just peel back the label a little then you can push this back down afterwards.



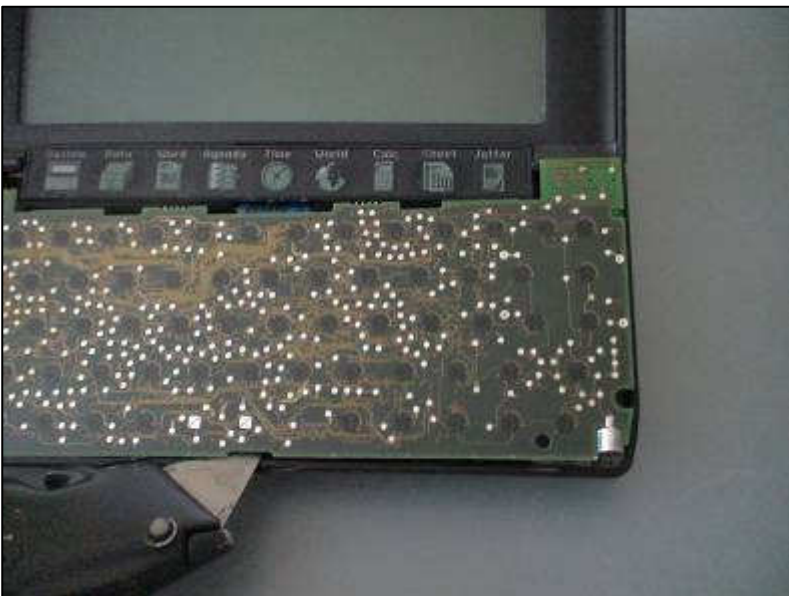
3. Using a blunt knife, release the two centre tabs on the bottom edge of the key surround.



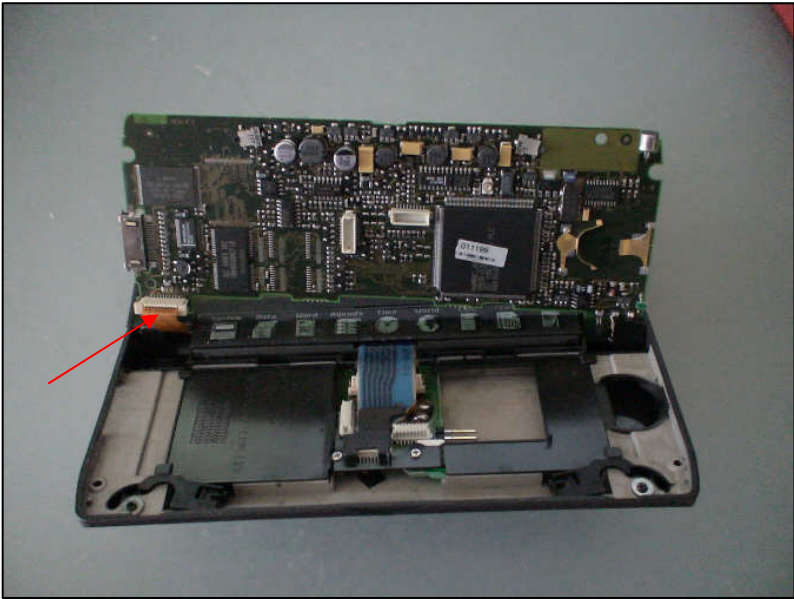
4. Lift the front of the key surround so that the rear tabs are released. Remove the key surround to leave the machine looking like the picture.



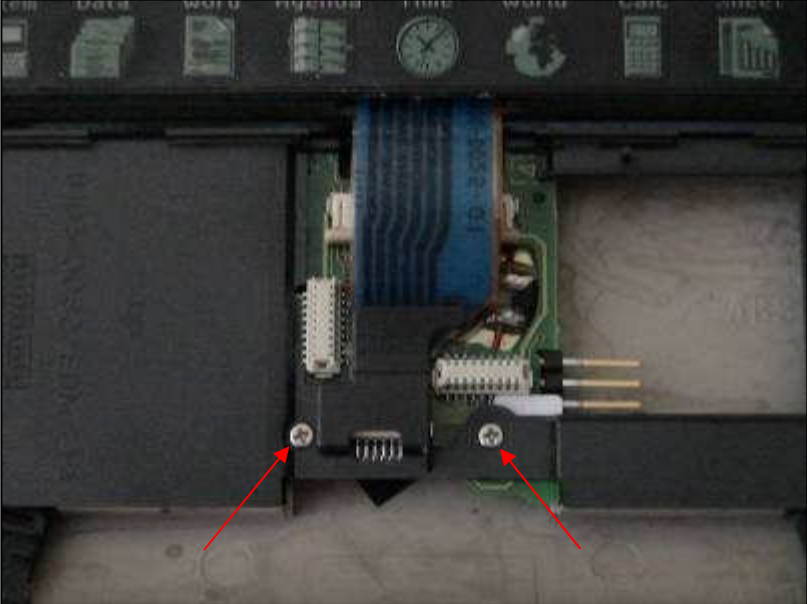
5. In order to remove the keys and membrane you have to ensure that the key caps do not all fall off. To do this, put the key surround back over the keys and 'flip' the surround and keys over to leave the membrane on top of the surround as shown. Put the assembly aside for later.



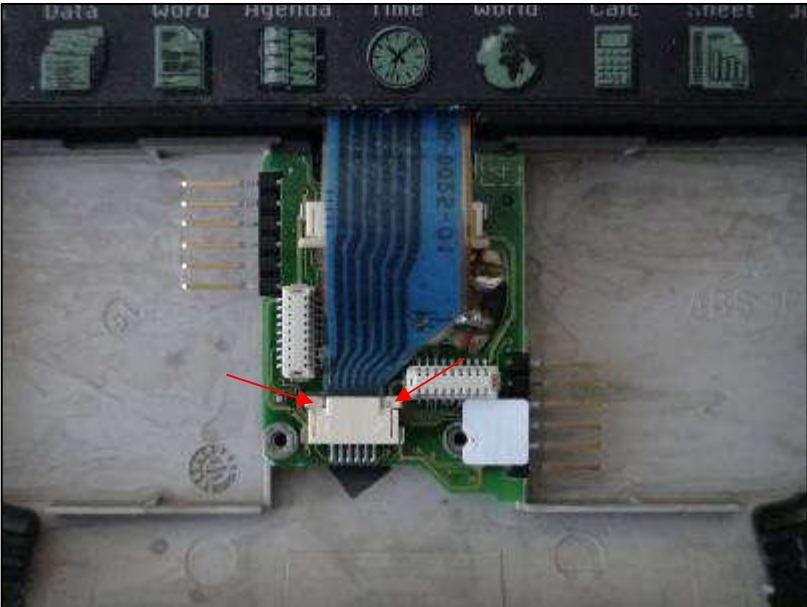
6. With a blunt knife, begin to lift the motherboard from the slot in the front as shown. Completely lift up the right hand side of the board so that you can release the connector from its slot in the left hand side.



7. Lift the motherboard to reveal the battery flexi as shown in the diagram. Remove the flexi from the ZIF socket by lifting the two tabs on the side away from the motherboard. Remove the motherboard and put it aside for later.

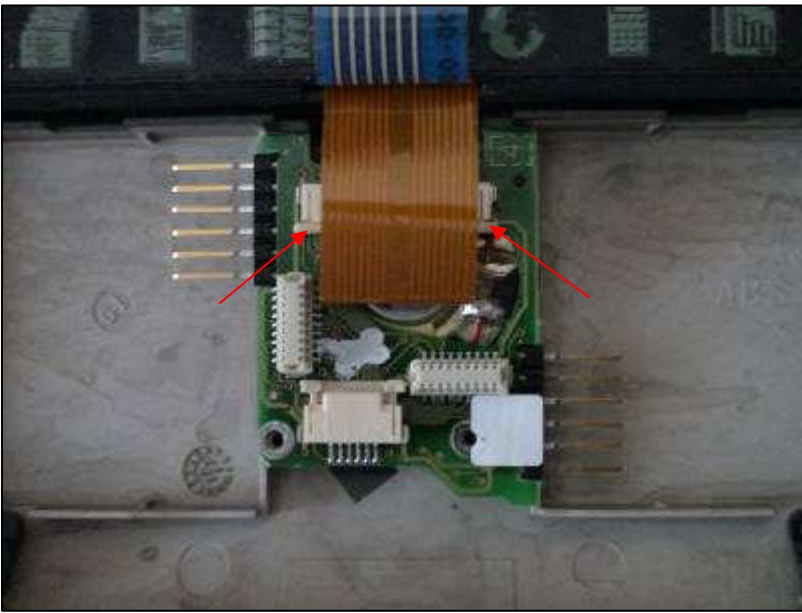


8. Remove the memory card cover by removing the two silver screws shown. Put the memory card cover aside for later.



9. Remove the blue icon bar flexi from the speaker PCB by lifting the two tabs shown. Lift the flexi out of the way.

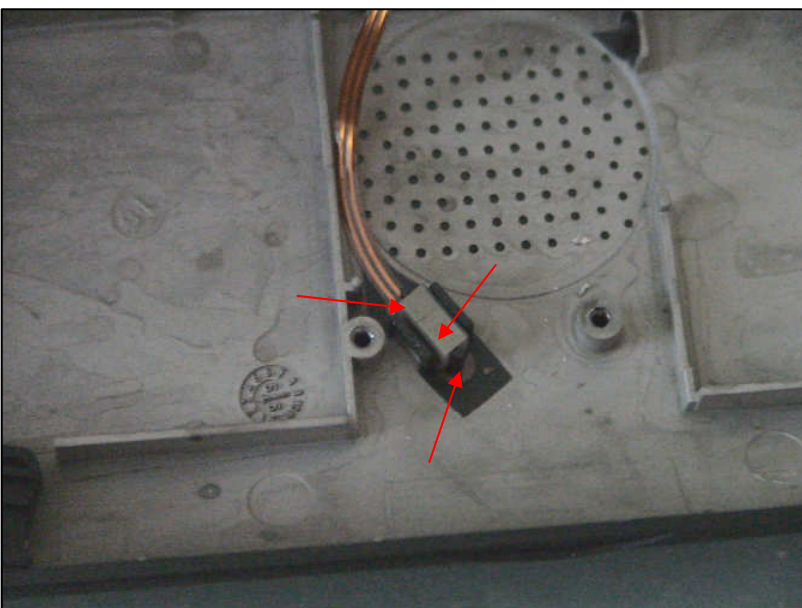




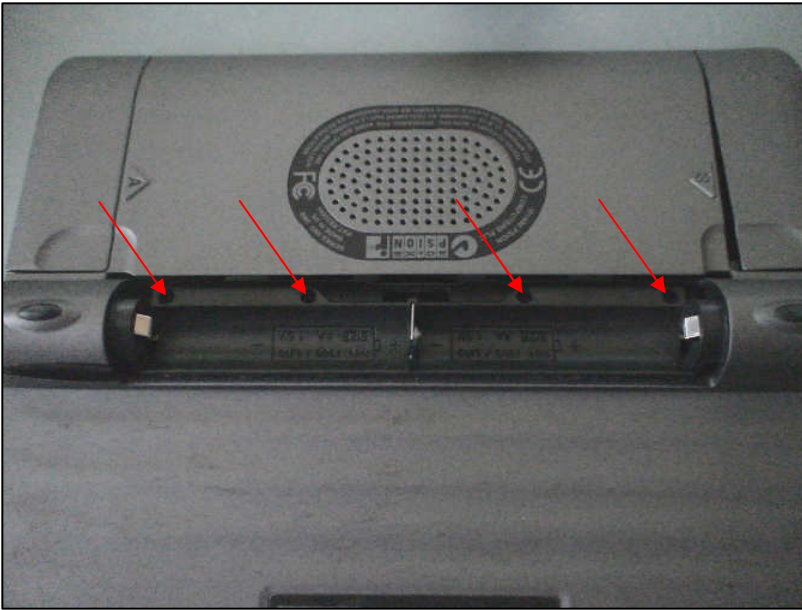
10. Remove the screen flexi from its ZIF connector by sliding the two tabs shown away from the screen.



11. With a blunt knife, lift the seaker PCB at the front and pull forward to release the rear tabs. CAUTION: You may need to release the flexi and rubber elastomeric strip.



12. Remove the rubber elastomeric strip and put aside for later. Lift the backlight flexi from the two posts.



13. Turn the unit over and remove the four screws in the rear cover as shown.



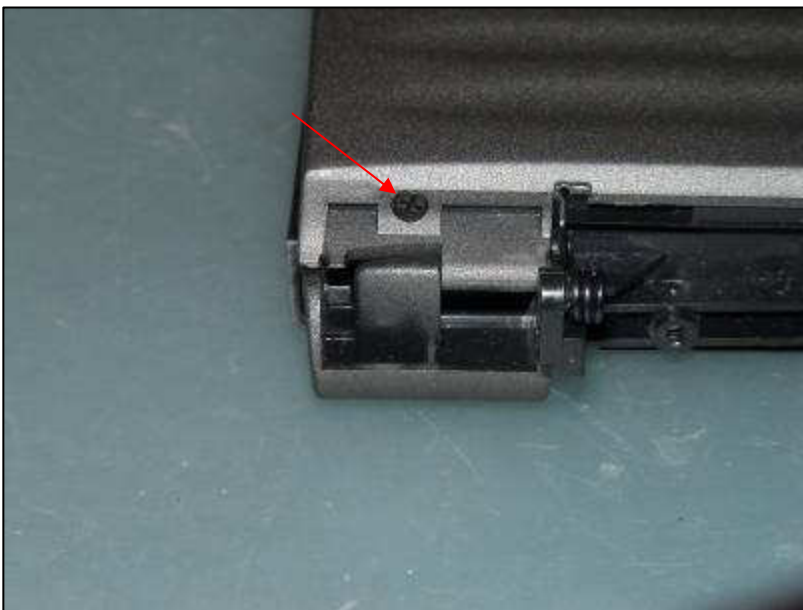
14. Close the lid and gently pull off the rear cover ensuring you do not pull on the flexi that still passes through a slot in the main body.



15. Remove the rear cover by gently bending the flexi as shown to get it through the hole in the main unit.



16. Using a blunt knife, pop the tabs on the screen bezel out from the screen frame. There are two large ones on either side and two in the centre.

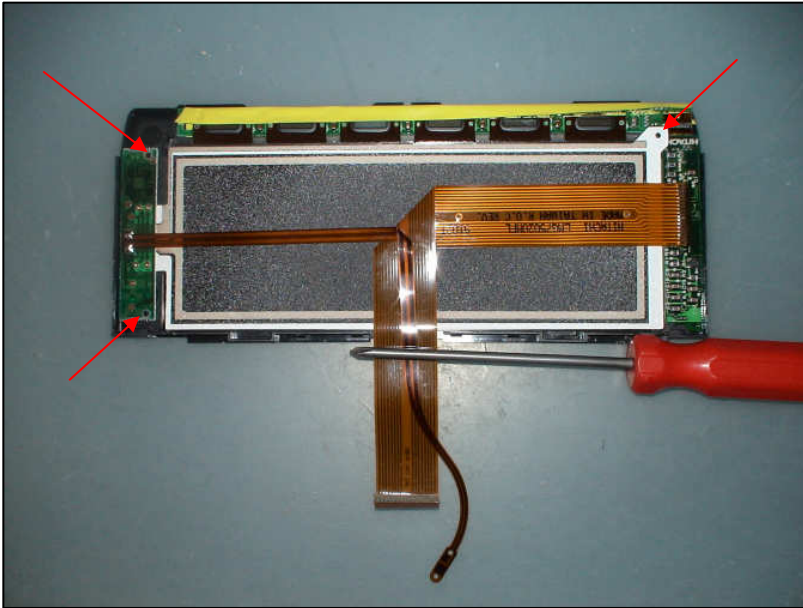


17. Now unscrew the two screen securing screws (one on each side) as shown.

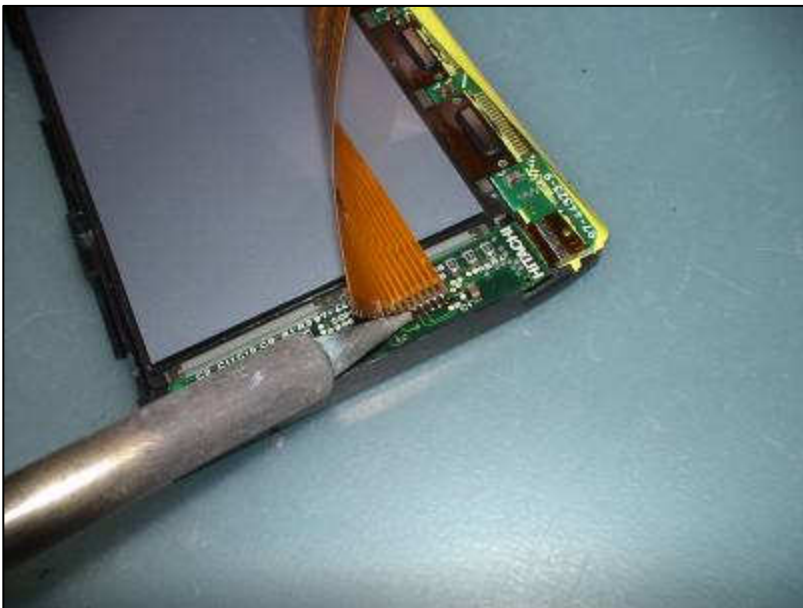


18. Now remove the screen by gently lifting the top forwards and sliding the screen upwards. Be very careful that the two flexi's do not get tangled/trapped.





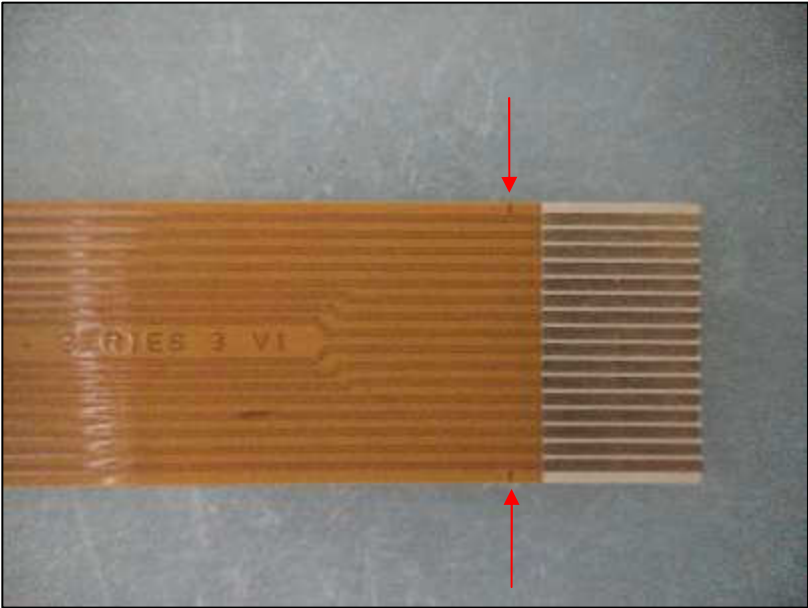
19. Once the screen has been removed, turn it over and note that the longer thinner backlight flexi is on top of the screen flexi (the thicker one). Also note that the backlight is located on the 3 pins shown.



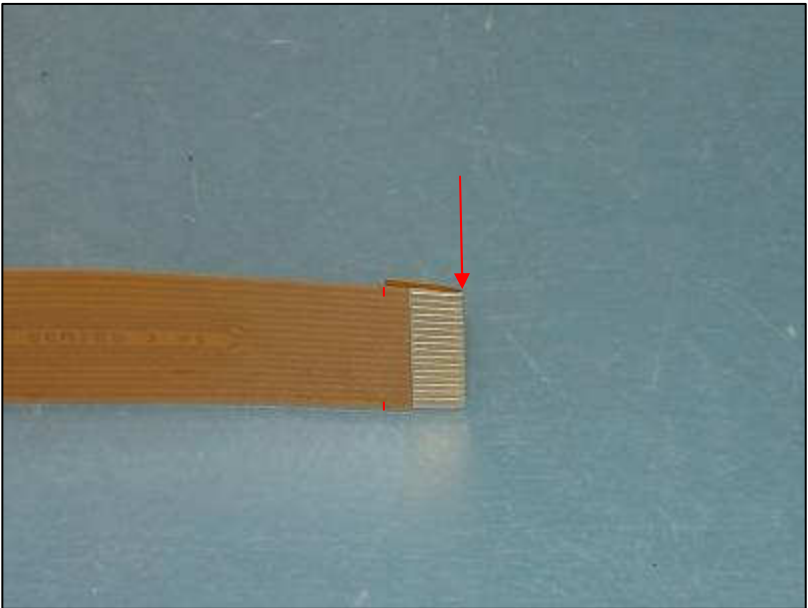
20. Using a temperature controlled soldering iron, remove the flexi from the screen PCB. You will need to heat more than one track at a time and gently 'peel' the old flexi from the PCB. DO NOT pull too hard otherwise you will rip tracks off the screen PCB making it scrap!



21. The pads on the PCB then need to be cleaned and tinned to leave shiny joints with small amounts of solder on them. If there is excessive residue on the board then this should be cleaned off with IPA.



22. The end of the new flexi needs to be prepared for soldering to the PCB. There are 2 alignment marks on our flexi's as shown. The flexi should be folded over so that the end is aligned with these marks.

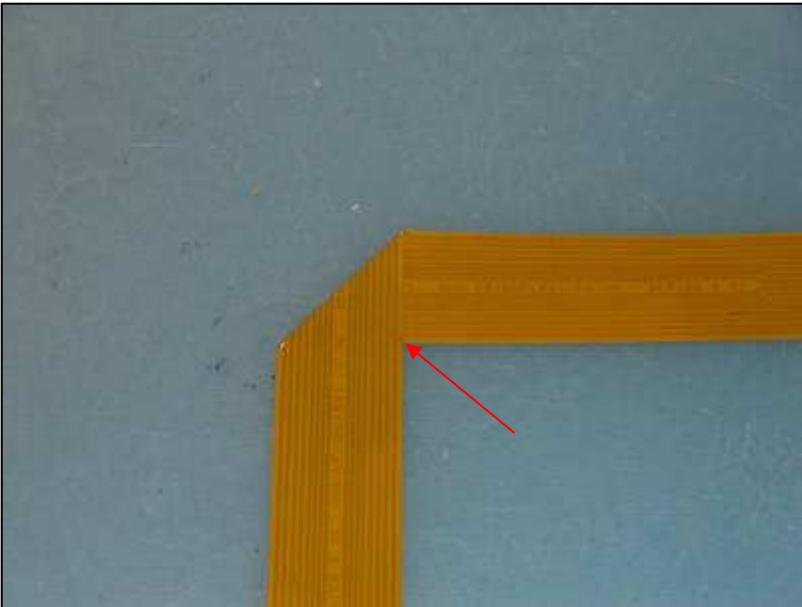


23. The crease line shown arrowed should be firmly folded using fingers only. The alignment marks are highlighted for clarity.

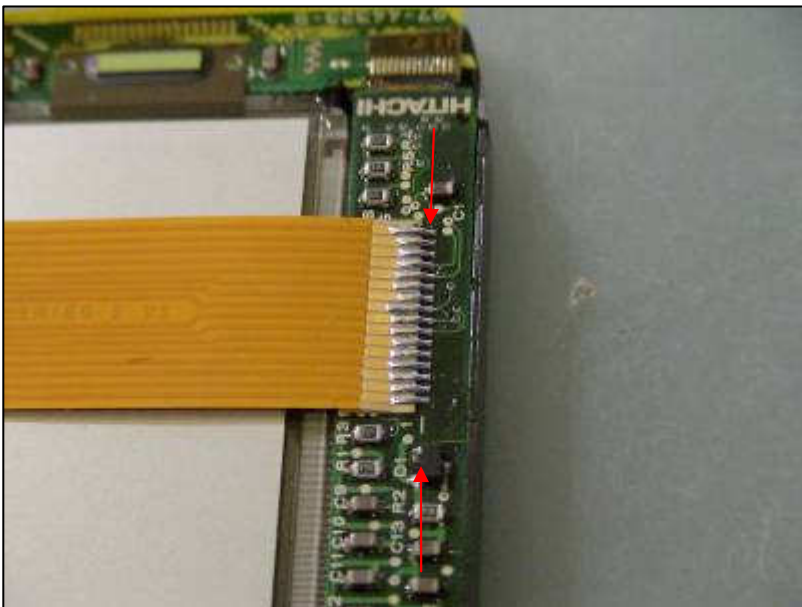


24. With the text uppermost and the folded end to the right, locate the centre folding alignment marks shown highlighted.





25. Now fold the flexi at the alignment marks as shown, ensuring the flexi makes a 90° angle and that the mark shown is aligned correctly



26. Place the flexi approx 1mm back from the 2 marks highlighted and solder the flexi to the PCB. Ensure it is held down closely to the PCB and parallel with the long edges of the screen.

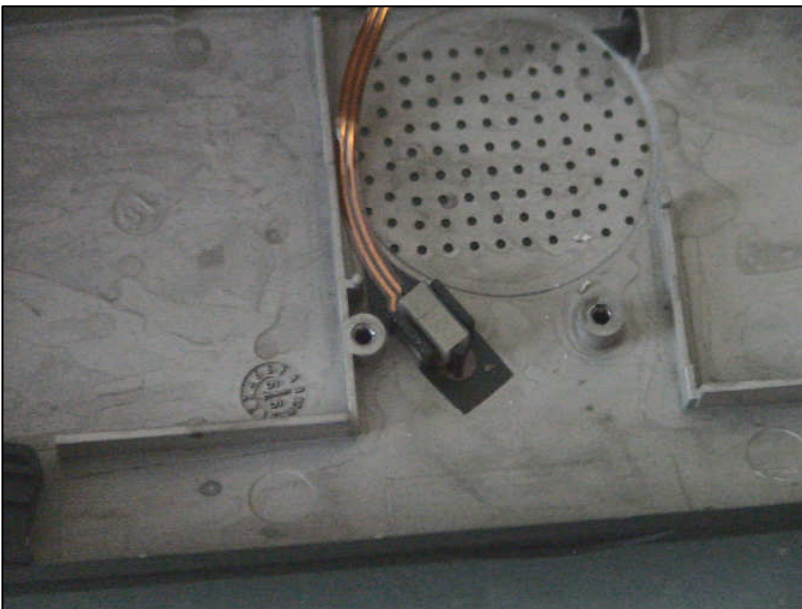


**Reassembly is essentially the reverse of assembly with the following points to note:-**

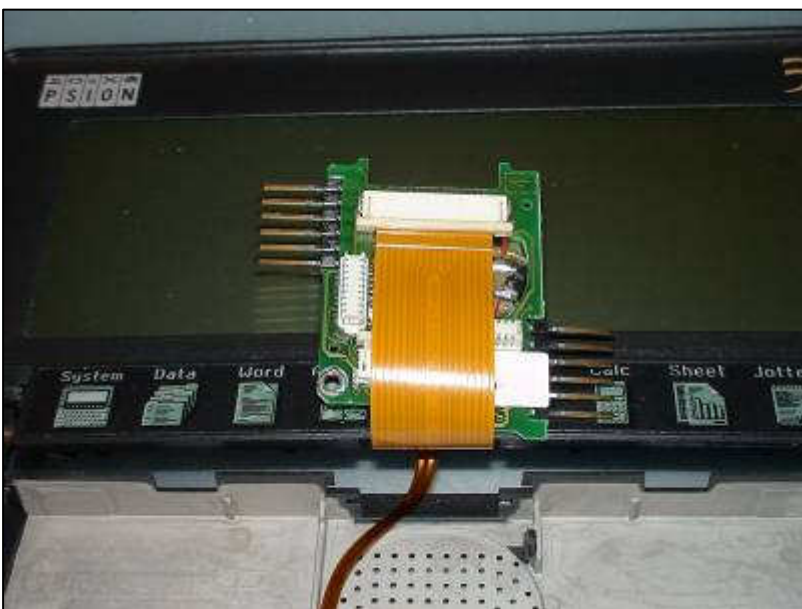
27. Replace the backlight and ensure it is located on the 3 pins. Ensure the backlight flexi is above the screen flexi.



28. Refit the screen by sliding the screen flexi and backlight flexi under the blue icon bar flexi. Ensure the bottom of the screen is in the screen casing and gently slide down ensuring the flexi's do not get snagged. Clip the tabs at the top of the screen back under frame. Now replace the two screws on the outer of the screen casing to secure the screen.



29. Replace the backlight flexi onto the two pins in the base and place the elastomeric block back between the two pins.



30. Take the speaker PCB, place as shown on the icon bar and ensure the blue flexi is behind it. Now insert the new screen flexi into the ZIF socket as far as it will go. Push the sides of the ZIF socket away from the flexi into the body of the socket to secure the flexi. It should now look like the picture.

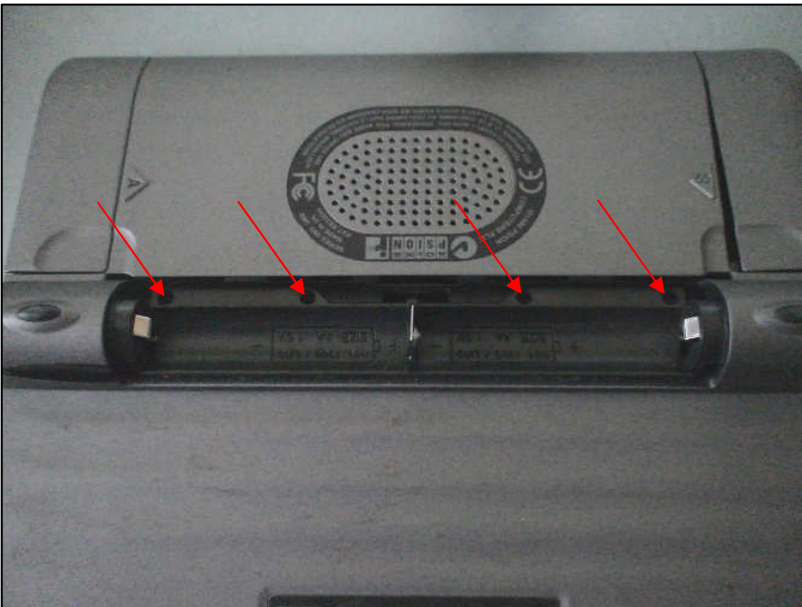




31. Now flip the speaker PCB a full 360 so the flexi is back on the top with a bend in it as shown. Now insert the blue flexi into its ZIF socket in the same way as above.

Ensuring the two small nubs (arrowed) on the PCB are inserted into the two lower slots.

Secure the speaker PCB back using the black plastic port protector and two silver screws. Note: all the Nibbs on the black protector need to be above the PCB and case edges



32. Now reattach the rear casing by gently squeezing the stiff flexi end through the slot in the casing so it comes out in the motherboard space. Push the rear casing onto the back of the machine and secure the 4 retaining screws.



33. Connect the power flexi (on the left of the icon bar) to the motherboard ZIF connector, ensuring that the two tabs are pushed away from the flexi fully.



Pre-align the motherboard into its opening by inserting the connector on the left of the motherboard into its opening. Ensure the memory card doors are open and push the motherboard onto the connectors by applying gentle pressure in the centre. Close the memory card doors.

Ensure the keyboard membrane is inserted into the key surround and remains with the keys face down (this must be performed upside down to avoid all the keys falling off). Invert the complete machine and offer the keyboard membrane up to the motherboard (still with the machine and keyboard upside down). Now flip the machine over holding the key surround. Once turned the right way up the key surround should be removed and inserted correctly. This is achieved by inserting the rear tabs under the hinges. The front of the keyboard can then be clipped back into place under the surround.

Retain the key surround by replacing the two screws under the two memory card slot covers.